

FMPC 10

3.3, page 136

#5

FMPC 10 3.3 p.136

5. Create a table of values choosing $x=0$ and two other values of x that are multiples of -4 .

t	V
0	6
4	3
8	0

for $V = -\frac{3}{4}t + 6$

if $t=4$, then $V = -\frac{3}{4}(4) + 6$

$$V = -3 + 6$$

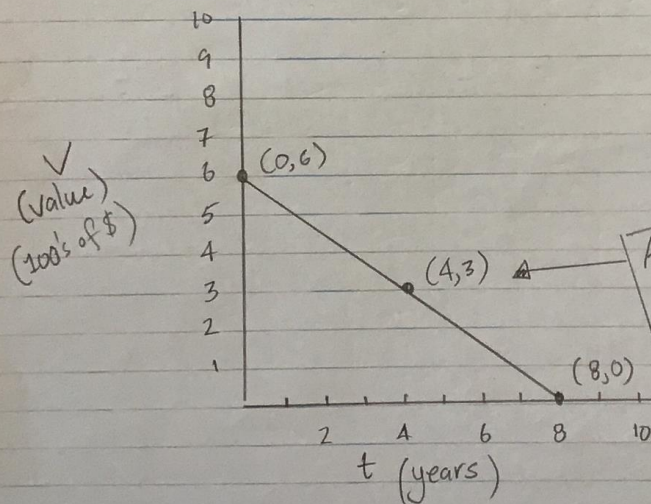
$$V = 3$$

if $t=8$, then $V = -\frac{3}{4}(8) + 6$

$$V = -3(2) + 6$$

$$V = -6 + 6$$

$$V = 0$$



AFTER 4 years the computer is worth \$300.

FMPC 10

3.3, page 136

#7

FMPC 10 3.3 p. 136

#7. $V + 25t = 300$

create a table of values ① Let $V=0$ then find t

t	V
12	0
0	300
1	275

$$0 + 25t = 300$$

$$25t = 300 \rightarrow t = \frac{300}{25} \rightarrow t = 12$$

② Let $t=0$, then find V

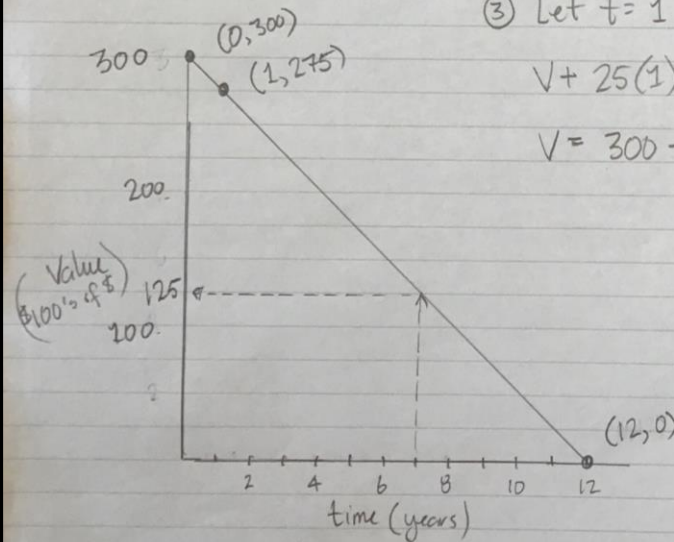
$$V + 25(0) = 300$$

$$V = 300$$

③ Let $t=1$, then find V

$$V + 25(1) = 300$$

$$V = 300 - 25 \rightarrow V = 275$$



The question is asking for the value of the car when it is 7 years old.

$$\$125 \times 100 = \$12500$$

↑
because the scale is in
\$100's of dollars

FMPC 10

3.3, page 136

#8

FMPC 10 p.136

8. $T + 2H = -2$

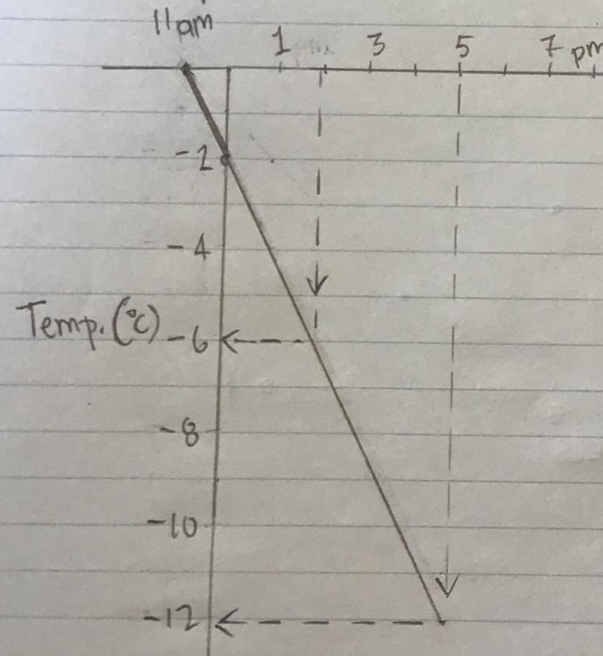
create a table of values

let $H=0$ \longrightarrow
 $T=0$ \longrightarrow
if $H=1$

H	T
0	-2
-1	0
1	-4

then $T + 2(1) = -2$
 $T + 2 = -2$
 $T = -4$

Graph the three coordinates



a 2pm \longrightarrow -6°C

@ 5pm \longrightarrow -12°C

FMPC 10

3.3, page 137

#9

FMPC 10 3.3 p.137

9. let d represent the number of dimes

n represent the number of nickels

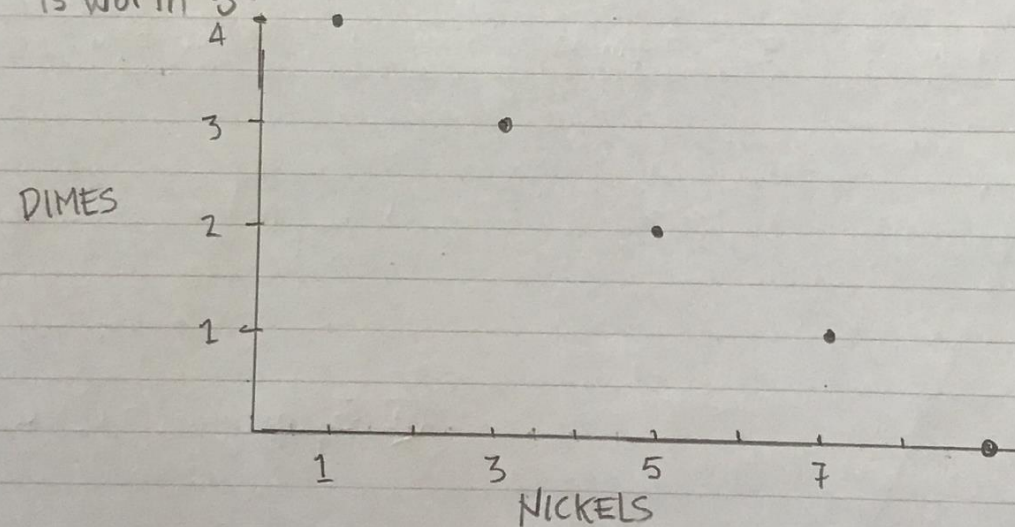
for a total of $45^{\text{¢}}$ we can say

$$5n + 10d = 45$$

$5n$ because each nickel
is worth $5^{\text{¢}}$

$10d$ because each
dime is worth $10^{\text{¢}}$

n	d
1	4
3	3
5	2
7	1
9	0



FMPC 10

3.3, page 137

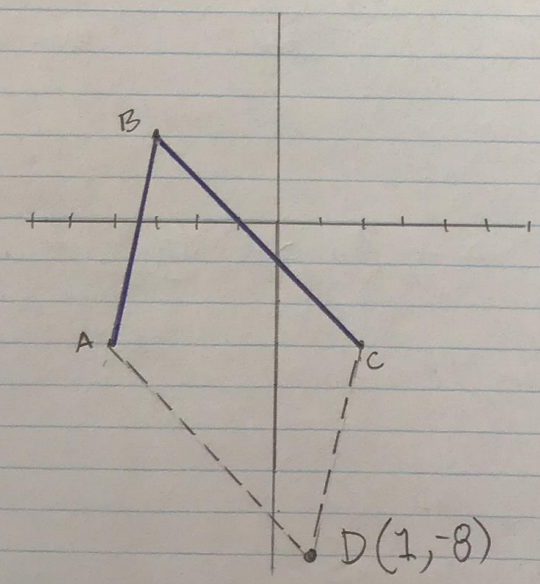
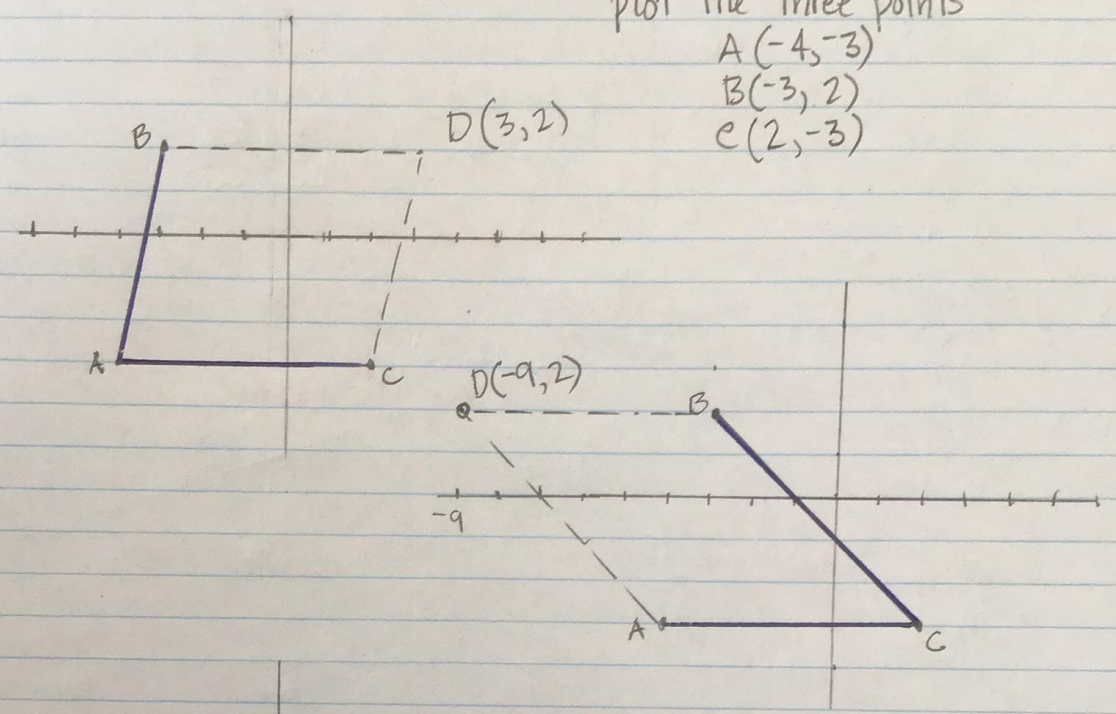
#10

FMPC 10 3.3 p.137

10.

plot the three points

- A (-4, -3)
- B (-3, 2)
- C (2, -3)



- ① The 3 points can be joined by 2 lines 3 ways (in pen)
- ② Create a parallelogram after doing this.

FMPC 10

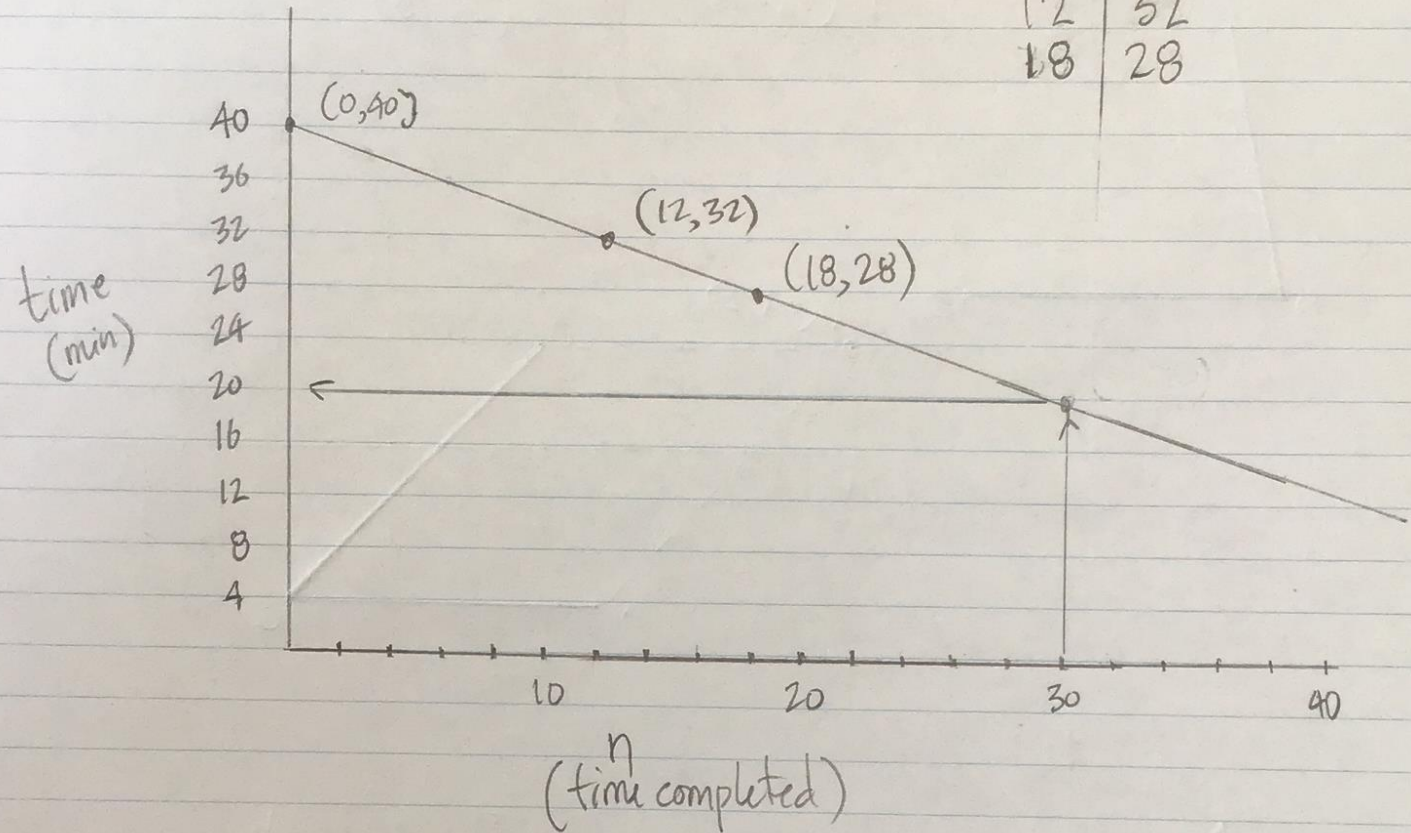
3.3, page 137

#11

FMPC 10 3.3 p.137

11. $t = 40 - \frac{2}{3}n$

n	t
0	40
12	32
18	28



It take her 20 minutes on the 30th try

FMPC 10

3.3, page 137

#12

FMPC 10 3.3 p.137

#12 Facts: - there are 12 gears on the bike

- the SUM of the gears going DOWNHILL and UPHILL always add to 18 $\rightarrow D+U=18$

Create a table that shows this relationship

Downhill (D)	Uphill (U)
--------------	------------

12	6
11	7
10	8
9	9
8	10
7	11
6	12

